



integrated

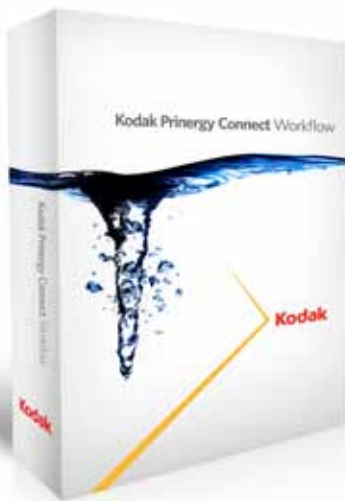
digital and conventional prepress

Kodak

Prinergy Connect
Workflow

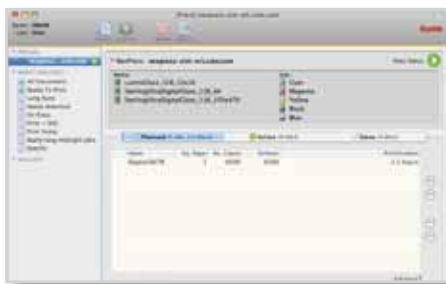


Kodak Prinergy Connect Workflow solutions deliver outstanding performance for all sizes of commercial and publication printers and trade shops. Each workflow configuration offers automated processing, including preflight, color management, trapping, and imposition.



New: Digital Press Management

Prinergy Connect Workflow now offers Digital Press Management, a single centralized solution that allows you to drive digital jobs with the power, flexibility and control that has made the **Prinergy Workflow** the long-standing leader in traditional print workflow. Now one workflow can control input, processing

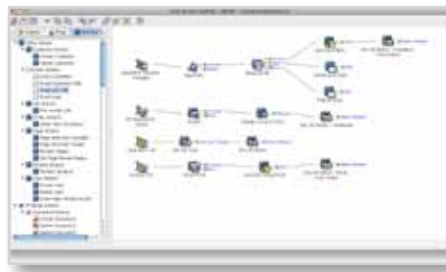


Fast, centralized handling of short-run jobs.

and output for conventional and digital print, with power and automation for streamlined productivity in all job sizes and run lengths.

Streamline Job Processing with Rules-Based Automation

Rules-Based Automation is now even more powerful, with the ability to read JDF information in a job and use it to make intelligent decisions about how to process, impose and output files for automatic processing.



Track and report Rules-Based Automation activity.

Accelerate Static and Variable Data Printing

Use one workflow system to control static and variable printing—PDF features now include support for **Adobe Variable PDF** files and the rich feature set of **Adobe Acrobat 9 Software**. Adobe's PDF Print Engine v1.1 is incorporated,

for transparent processing of native PDFs from the latest design and layout software.



Layered PDF Versioning improves the handling of versioned jobs.

The **Prinergy Connect Workflow** is the system of choice for powerful file preflighting, color management, trapping, and imposition features—as well as advanced screening support, flexible device connectivity, database-driven production management. With the addition of Digital Print Integration, operators can control and route digital print tasks, and load balance jobs from delivery to press, with total visibility over the blended production environment, and optimized press utilization.

Kodak Prinergy Connect Workflow Specification Highlights

End-to-end native PDF processing	Uses standard PDF files as the internal production file format throughout the workflow. Files remain editable using standard PDF tools.
Job and production management	Organizes prepress and CTP production with features such as job context, proofing, job processing history, archiving, and process and queue management.
JDF support	JDF Certified to many third-party vendors, helping ensure information and data exchange, for seamless integration and open connectivity with third party MIS and imposition systems. NEW: JDF-based RBA: Rules can be controlled by a job's JDF information.
PDF/X-1a and PDF/X-3	PDF/X-1a and PDF-X3 for input and output. Supports PDF/X-1a standard as internal digital master. Generates PDF/X-1a conforming files during the refine process and supports manual and automated publish PDF/X-1a functionality.
Oracle database	Tracks processing history and status throughout a job; enables automatic load balancing.
Automated preflight	Check and correct input files automatically. Report indicates what was checked and corrected, with hyperlinks to PDF file. Compliant with Ghent PDF Workgroup 2005 PDF/XPlus specifications.
Automated imposition	Automate job and imposition creation using JDF information, an MIS, or a JDF-capable production planning system such as Kodak UpFront Software. Create impositions using Prinergy Software's signature selection.
Page Aliases	When using Kodak Preps Software for ganging pages, Page aliases—links to the original page—are created in the ganged job. When the original page changes, any aliases are automatically updated.
Integrated Kodak Preps Imposition Software	Embedded imposition engine allows access to templates from within Prinergy Workflows.
NEW: Digital Print Integration	Digital Direct: bidirectional JMF enabled communication options for Kodak NexPress Digital Production Colour Press Engines, Xerox DocuColor Digital Presses, HP Indigo Digital Presses and Konica Minolta Devices. Digital Submit: drag-and-drop interface for creating and submitting digital jobs; for static PDF and PostScript File (and variable data input file formats such as PPML/VDX, PPML/GA, VPS)
Trapping	Automated PDF-to-PDF trapping.
Automated color matching and management	Converts RGB to CMYK and handles spot colors; can map spot colors to process colors based on standard or customized ICC profiles. Pantone ® library included.
NEW: PDF editing tools	Integrated PDF editing: edit jobs by exporting to Adobe Illustrator Software. Object structure and position is maintained. Custom plug-ins allow file resubmission back into the Prinergy Workflow.
PDF Compare and PDF Merge	Acrobat plug-ins that compare files and merge revised elements into updated production files.
PDF PlateBuilder	An Acrobat plug-in for creating custom plates, including white, varnish and bump plates.
DotShop Software	Plug-in for Acrobat software for screening options in PDF files.
Screening	AM screening, Kodak Staccato Screening, and Kodak Maxtone CX Screening NEW Staccato CX Screening enables users to fine-tune the highlight, midtone, and shadow dots of FM screens to exploit the capabilities of their platesetter, plates, press, and consumables.
Archiving	Database archiving in job context.
Layered PDF Versioning (LPV)	Manages and automates the proofing, approval, and plating of complex versioned print jobs. Manages incoming file formats and automates the process, creating single layered PDF files. NEW: LPV Approvals: Individual approval of items in a layered page, with "locking" of approved items within a page, so non-approved items can be changed while approved items are protected. NEW: LPV Color Extraction Override: Allows some pages to be output without the standard color extractions as the rest of the job.
Advanced Production Automation	Automatically assign pages to impositions, including page position and page geometry settings.
Rules-Based Automation	Allows operators to set up rules or conditions to automate workflow tasks. NEW: Log to History Action Suspended Rule Sets Pausing Rule Sets Digital printing enhancements Set JDF Intent (apply intent from JDF content to the job)

Kodak Prinergy Connect Workflow Specification Highlights (cont.)

Production reporting and MIS connectivity	Enables exchange of production data and job status information between a prepress workflow system and MIS, with reporting feature for real-time view of data summary.
PrintLink	Produces CIP3 and JDF-compliant files for ink-key setting, and generates ink usage reports.
Web-growth compensation	Registration compensation for linear and non-linear web growth. (paper stretch on web presses)
Hot standby server	A duplicate, up-to-date database.
Localized Mac OS or Windows interface	Prinergy System interface available in Mac OS and Windows versions. Workshop is available in English, German, French, Spanish, Japanese, and Chinese.
Training	Training for two (2) operators at Kodak training facilities is included.
File types: Input Output	NEW: PDF 9 Support PDF 1.3, 1.4, 1.5, and 1.6, PDF/X-1a, PDF/X-3, PostScript , EPS, TIFF/IT-P1, Adobe Photoshop 8-bit TIFF, DCS1, DCS2, CT/LW, and copydot files. Vector formats: PDF 1.3, PDF/X-1a, PDF/X-3, PostScript level 2 and 3, vector DCS and EPS files. Raster formats: DCS, EPS, TIFF, CT, HPRTL, Epson 5000 and 9000, Kodak Approval TIFF and EPS, JPEG, BMP, CT/LW, TIFF/IT, and raster PDF files.
Devices Supported: Proofing CTP Direct imaging offset press Digital press	Kodak Approval Halftone Proofer, Kodak InSite Software Solutions, Kodak Matchprint Inkjet Proofing Systems, Kodak Matchprint Virtual Technology, Kodak PressProof Proofing Software, Kodak Veris Digital Proofer, and qualified third-party proofer. Kodak Magnus Platesetters, Kodak ThermoFlex Flexographic Platesetters, Kodak Trendsetter Platesetters, and qualified third-party devices. Kodak DirectPress DI Systems. Kodak NexPress Digital Production Color Presses and qualified third-party presses.

Note: Some features are optional. Contact your **Kodak** representative for details.

The **Prinergy Connect** Workflow enhances productivity in any printing environment—large jobs or short runs, conventional or digital. **Prinergy** Workflows use JDF to share job data, imposition, and page assignment information with content preparation, production planning, prepress, and business systems. Reduce costs and build a more efficient environment with improved workflow control and automation based on industry-standard specifications.

To learn more about solutions from Kodak:

Visit graphics.kodak.com
Or in North America, call +1-866-563-2533

Produced using **Kodak** Technologies.

Eastman Kodak Company
343 State Street
Rochester, NY 14650 USA

©Kodak, 2009. Kodak, Approval, DirectPress, DotShop, HyperFlex, InSite, Magnus, Matchprint, Maxtone, NexPress, Preps, PressProof, Prinergy, Prinergy Connect, Staccato, ThermoFlex, Trendsetter, UpFront, and Veris are trademarks of Kodak.

Pantone is a trademark of Pantone Inc.

Technical and environmental specifications subject to change.

U.ES.023.02.09.en.02 (K-819)

Integrate Kodak Web to Print Solutions

Kodak Web to Print Solutions extend the power of the **Prinergy Connect** Workflow with an array of productivity options, designed to reduce costly steps that come between meeting your customer's requirements and your profitability. The **InSite** Storefront System, **InSite** Variable Data Print System and the **Prinergy** Workflow

provide an integrated environment for total workflow automation. From the customer's order to the printed product, the **Prinergy Connect** Workflow delivers true 'zero touch' automation.

The Kodak logo is displayed in its signature red color. It is positioned at the bottom right of the page, with a large, stylized yellow arrow pointing towards it from the bottom left corner.